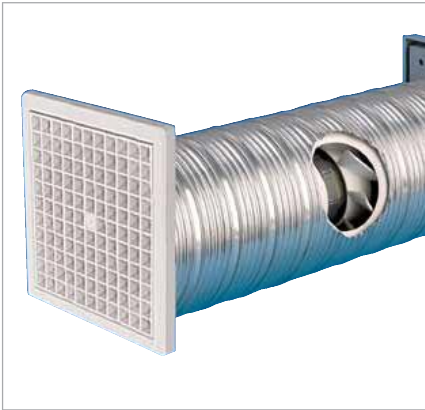


# Slimline Wall Fan Kit Range

SF100W/120W/150W

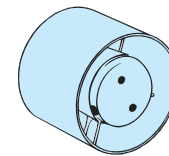
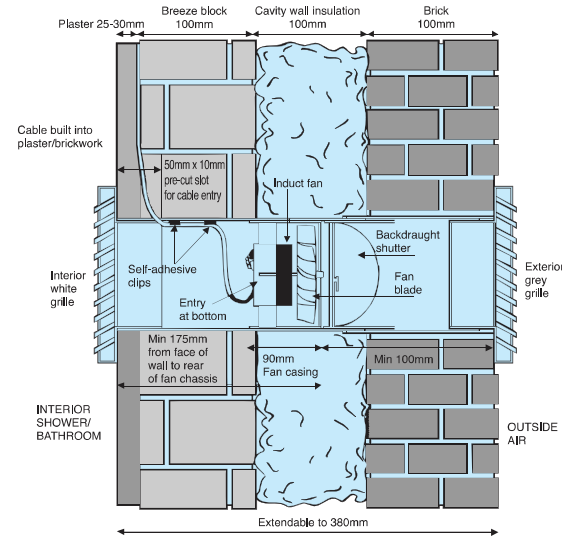


- Designed for use in bathrooms, toilets and shower rooms, the Slimline Wall Fan has a unique profile of only 15mm.
- Utilising a revolutionary design concept, the unit is mounted inside the wall, 175mm from the face of the internal wall which enables installation within the splash area of a shower or bath (where regulations prevent the installation of conventional fans).
- Unobtrusive and quiet, the SF100W has an extract rate of 85m<sup>3</sup>/hr 23 litres per second, whilst the larger SF120W extracts 130m<sup>3</sup>/hr 36 litres per second. The SF150W, the largest fan in the range, has a maximum performance of 230m<sup>3</sup>/hr, 64 litres per second.
- The SF100W/120W/150W fan kits include an in-line tube fan with a mounted spring loaded backdraught shutter, a length of 380mm flexible aluminium telescopic ducting, one white internal and one grey external fixed louvre wall grille, self adhesive cable clips, fixing screws and plugs.
- Easy to follow instructions make installation simple.
- Designed to comply with the Building Regulations on Ventilation (F1).

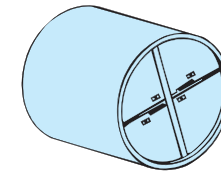
## Technical Details

Cat. No.	Product type
<b>SF100W</b>	Standard 4" model for remote switching
<b>SF120W</b>	Standard 5" model for remote switching
<b>SF150W</b>	Standard 6" model for remote switching

### Typical Installation



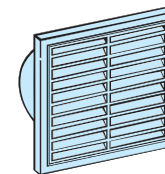
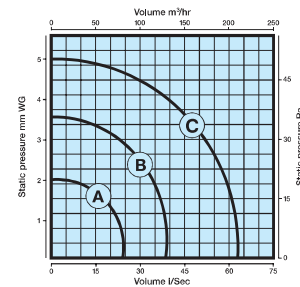
In-line fan



Backdraught shutter

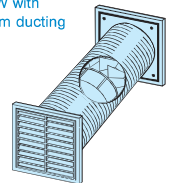
### Performance Graph

- (A) SF100W 85m<sup>3</sup>/hr, 23 litres per second
- (B) SF120W 130m<sup>3</sup>/hr, 36 litres per second
- (C) SF150W 230m<sup>3</sup>/hr, 64 litres per second



Fixed louvre wall grilles

SF100/120/150W with flexible aluminium ducting



### Packaging

SF100W In outers of 10 measuring 605mm x 318mm x 745mm - weight 12kgs

SF120W In outers of 10 measuring 510mm x 234mm x 867mm - weight 13kgs

SF150W In outers of 10. For packaging dimensions, contact our technical department

### Installation

Designed for mounting in-line in walls and discharged through the flexible aluminium ducting provided.

### Electrical

220-240V - AC, 50Hz  Single phase consuming 16W on SF100W, 15.5W on SF120W and 25W on SF150W.

These fans are double insulated and do not require an earth. All wiring must comply with current IEE regulations. A double pole isolating switch, having a contact separation of at least 3mm in all poles, must be used with a 3 amp fuse fitted. The fan should not be accessible to a person using either the shower or bath, and mounted a minimum of 1.8 metres from the floor.

### Additional Data

**100mm (4") Range**  
 Maximum pressure: 20 p.a.  
 Fan speed: 2400 r.p.m.  
 Sound volume: 41.0 dB(A)  
 Maximum operating temperature: 40°C

**120mm (5") Range**  
 Maximum pressure: 35 p.a.  
 Fan speed: 2000 r.p.m.  
 Sound volume: 41.0 dB(A)  
 Maximum operating temperature: 40°C

**150mm (6") Range**  
 Maximum pressure: 50 p.a.  
 Fan speed: 2400 r.p.m.  
 Sound volume: 40.0 dB(A)  
 Maximum operating temperature: 40°C

### Dimensions (mm)

**SF100W**  
**SF120W**  
**SF150W**  
 See page 43.  
 (ID100/120/150 series)