

100mm (4") Fan Range

XF100/XP100/WF100



- Designed for wall, ceiling or window mounting, this comprehensive range offers a wide selection of models for use in bathrooms and toilets.
- Quiet and efficient, the 100mm (4") series has an impressive extract rate of 85m³/hr, 23 litres per second, and is available in the ten options detailed opposite.
- The units are all manufactured using high ABS thermoplastics for strength and durability, aesthetics and easy cleaning.
- Power is provided by a single phase induction motor with pre-oiled bearings for a long, maintenance-free life.
- Designed to comply with the 2006 Building Regulations on Ventilation (F1).

Technical Details

Cat. No. Product type

100mm (4") Wall/Ceiling Fans

XF100S	Standard model for remote switching
XF100P	As above supplied with pullcord switch
XF100T	Timer model incorporating integral adjustable electronic timer (1-20 mins)
XF100TP	As above but with pullcord override switch. Requires no switched live
XF100MH	Electro-Mechanical Humidity Control with on/off Switch adjustable 20-90% RH
XF100MHP	As above but with pullcord switch and neon light
XF100MHT	As XF100MH but with Electronic Timer
XF100H	Humidity control which is adjustable between 40% RH and 95% RH Complete with integral adjustable timer (1-20 mins)
XF100HP	As above but with pullcord override switch. Requires no switched live
XF100PIR	PIR activated model which switches on as a person enters the room and runs on after the room is vacated. There is no need to connect to a separate switch Timer adjustable between 1-20 mins. Requires no switched live

100mm (4") EXTRACTOR PAKS with aluminium flexible ducting and wall grille

XP100S	Standard model for remote switching
XP100P	As above supplied with pullcord switch
XP100T	Timer model incorporating integral adjustable electronic timer (1-20 mins)
XP100TP	As above but with pullcord override switch. Requires no switched live Humidity control which is adjustable between 40% RH and 95% RH
XP100H	Complete with integral adjustable timer (1-20 mins)
XP100HP	As above but with pullcord override switch. Require no switched live
XP100PIR	PIR activated model which switches on as a person enters the room and runs on after the room is vacated. There is no need to connect to a separate switch Timer adjustable between 1-20 mins. Requires no switched live

100mm (4") WINDOW FANS

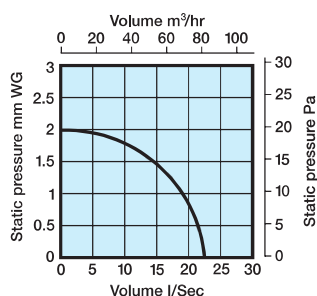
WF100P	Pullcord model
WF100T	Timer model incorporating integral adjustable timer (adjustable 1-20 mins) Complete with pullcord switch
WF100H	Humidity control which is adjustable between 40% RH and 95% Complete with integral adjustable timer (1-20 mins)
WF100PIR	PIR activated model which switches on as a person enters the room and runs on after the room is vacated. There is no need to connect to a separate switch Timer adjustable between 1-20 mins. Requires no switched live

Dimensions (mm)

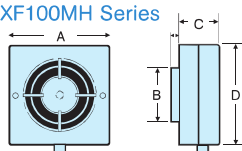
PRODUCT	A	B	C	D	E	F	G	H	I	J	K
XF100	163	98Ø	75	30	163						
XF100MH	163	98Ø	67	163							
XP100	140	33	98Ø	15	98Ø	75	30	163	110Ø	380	102Ø
WF100	163	90	30	163							

Performance Graph

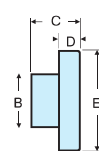
XF/XP/WF100 Series 85m³/hr, 23 l/s



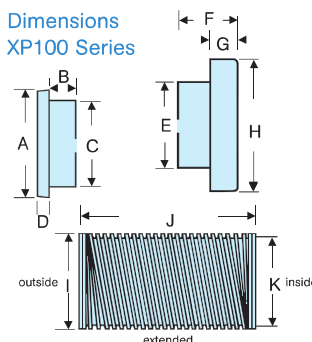
Dimensions XF100MH Series



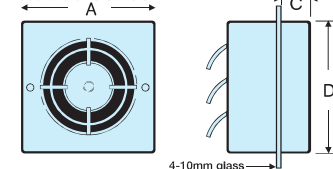
Dimensions XF100 Series



Dimensions XP100 Series



Dimensions WF100 Series



Packaging

XF100 Series in outers of 10 measuring 370mm x 200mm x 560mm - weight 7kgs

XF100MH Series in outers of 10 measuring 572mm x 232mm x 413mm - weight 9kgs

XP100 Series in outers of 10 measuring 380mm x 210mm x 765mm - weight 9kgs

WF100 Series in outers of 10 measuring 360mm x 210mm x 570mm - weight 9kgs

Installation

XF100 Series designed for wall mounting (pullcord version wall mounting only) through 100mm (4") diameter flexible or rigid pipes or Manrose low profile, flat channel ducting systems.

XP100 Series designed for through wall fixing, supplied with aluminium flexible ducting and external wall grille. Cut out for XP100 kits (112mm/4 1/2").

WF100 Series designed for window mounting through a standard 115 - 155mm Ø hole.

Electrical

220-240V - AC. 50Hz □. Single phase consuming 14 watts. These fans are double insulated and do not require an earth. All wiring must comply with current IEE regulations. A double pole isolating switch, having a contact separation of at least 3mm in all poles, must be used with a 3 amp fuse fitted. The fan must not be accessible to a person using either the shower or bath and mounted a minimum of 1.8 metres from the floor.

Additional Data

100mm (4") Range

Maximum pressure: 20 p.a.

Fan speed: 2400 r.p.m.

Sound volume: 41.0 dB(A)

Maximum operating temperature: 40°C.