



## ***GRIDPRO Interchangeable Plates***



GRIDPRO plates are all unfurnished for easy and quick configuration with the required modules.

The 1 to 8 Gang plates designed for GRIDPRO are available from each of the existing Click wiring accessory ranges. These new additions seamlessly match the range they belong to, including standard fixing centres allowing uniform alignment. All range finishes and warranties apply to the new GRIDPRO plates.

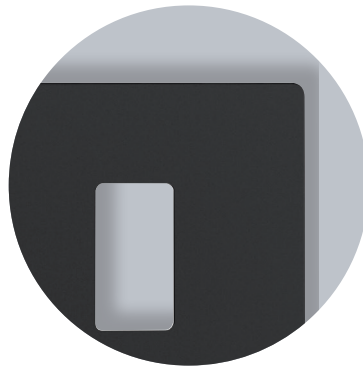
**GRIDPRO Interchangeable Plates**

**Product Range**

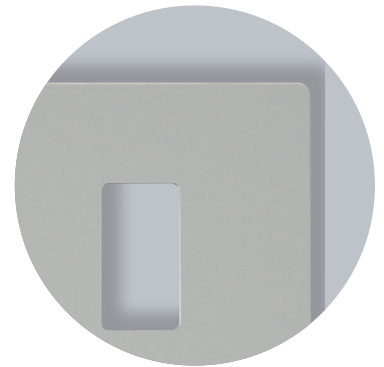
**Finish Comparison**



Brushed Steel (BS)



Matt Black (BK)



Polar White (PW)



Polished Chrome (CH)



Stainless Steel (SS)

**GRIDPRO Interchangeable Plates**

**Product Range**

**GRIDPRO Interchangeable Plate Inserts**

<b>SIN20200</b>	1 - 2 Definity Module Insert
<b>SIN20400</b>	3 - 4 Definity Module Insert



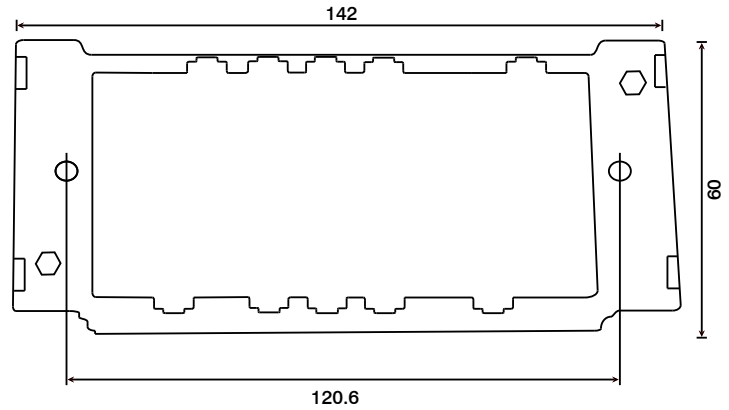
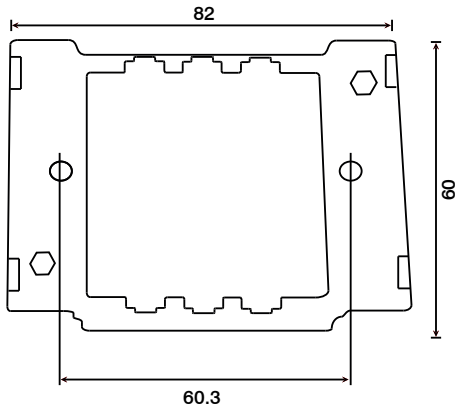
SIN20200



SIN20400

**GRIDPRO Interchangeable Plates**

**Product Dimensional Drawings (mm)**



Errors & Omissions excluded. Specification is subject to change without notice. Utilizes standard 1 gang and 2 gang BS4662 back boxes.

V1.0

Scolmore International Ltd, 1 Scolmore Park, Landsberg, Lichfield Road Ind. Estate, Tamworth, Staffordshire, B79 7XB

**Telephone:** 01827 63454

**E-mail:** sales@scolmore.com, technical@scolmore.com

**Facsimile:** 01827 63362

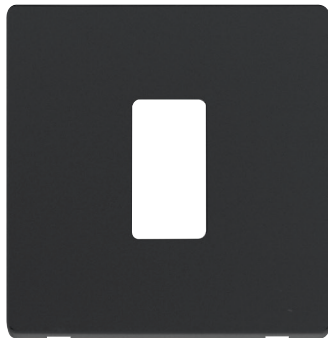
**Website:** www.scolmore.com

**GRIDPRO Interchangeable Plates**

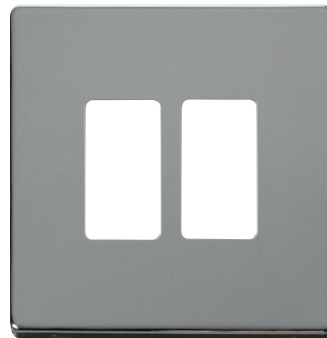
**Product Range**

**GRIDPRO Interchangeable Plates**

<b>SCP20401**</b>	1 Gang Definity Grid Cover Plate
<b>SCP20402**</b>	2 Gang Definity Grid Cover Plate
<b>SCP20403**</b>	3 Gang Definity Grid Cover Plate
<b>SCP20404**</b>	4 Gang Definity Grid Cover Plate



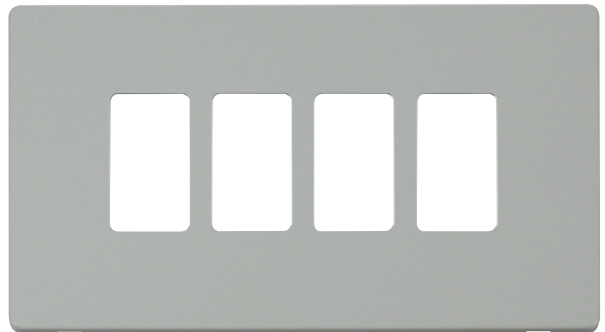
SCP20401BK



SCP20402CH



SCP20403SS



SCP20404PW



Errors & Omissions excluded. Specification is subject to change without notice. \*\* Denotes Cover Plate Finish. SIN20200 or SIN20400 to be used with all plate sizes. Utilizes standard 1 gang and 2 gang BS4662 back boxes.

V1.0

Scolmore International Ltd, 1 Scolmore Park, Landsberg, Lichfield Road Ind. Estate, Tamworth, Staffordshire, B79 7XB

**Telephone:** 01827 63454

**E-mail:** sales@scolmore.com, technical@scolmore.com

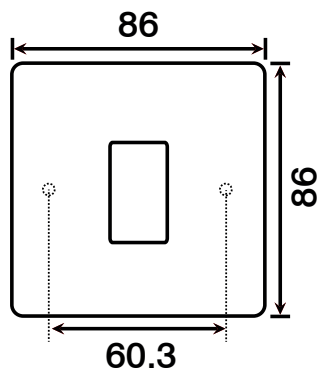
**Facsimile:** 01827 63362

**Website:** www.scolmore.com

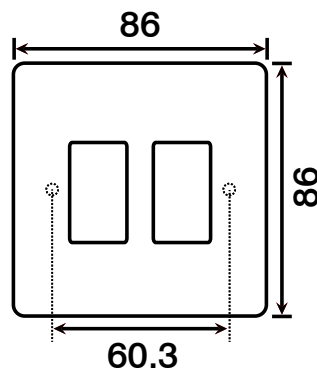
**GRIDPRO Interchangeable Plates**

**Product Dimensional Drawings (mm)**

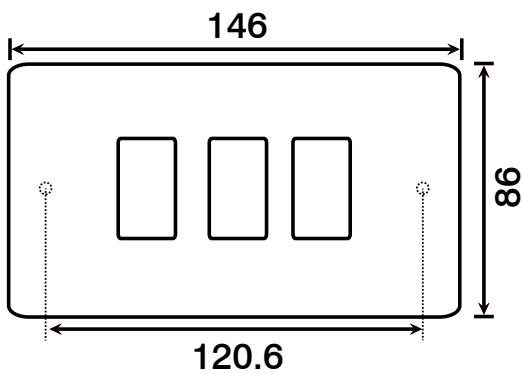
SCP20401



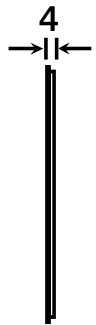
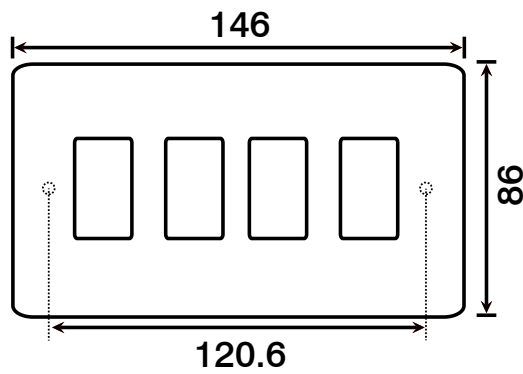
SCP20402



SCP20403



SCP20404



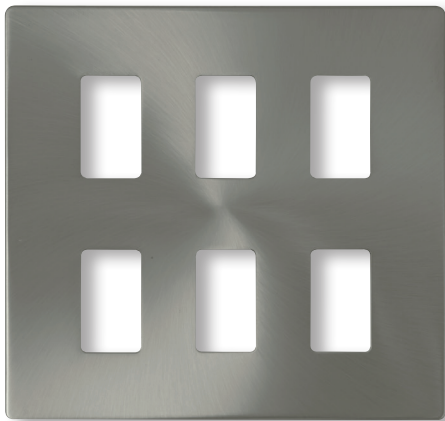
Errors & Omissions excluded. Specification is subject to change without notice. \*\* Denotes Cover Plate Finish. SIN20200 or SIN20400 to be used with all plate sizes. Utilizes standard 1 gang and 2 gang BS4662 back boxes.

**GRIDPRO Interchangeable Plates**

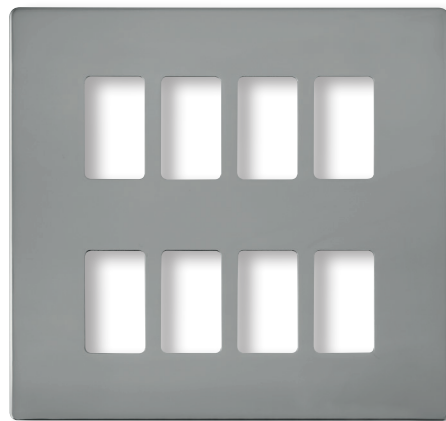
**Product Range**

**GRIDPRO Interchangeable Plates**

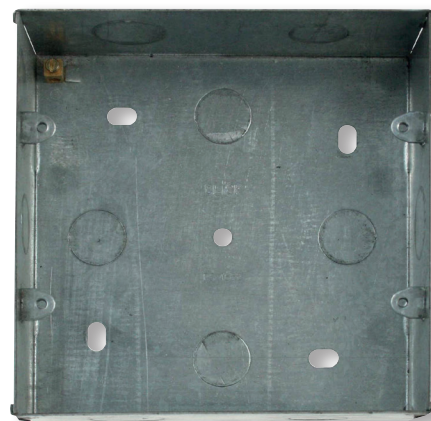
<b>SCP20506**</b>	6 Gang Definity Grid Cover Plate
<b>SCP20508**</b>	8 Gang Definity Grid Cover Plate
<b>WA512</b>	2 Gang Double Row K/O Box 47mm Deep



SCP20506BS



SCP20508CH



WA512



Errors & Omissions excluded. Specification is subject to change without notice. \*\* Denotes Cover Plate Finish. SIN20400 to be used with all plate sizes. Utilizes standard 1 gang and 2 gang BS4662 back boxes.

V1.0

Scolmore International Ltd, 1 Scolmore Park, Landsberg, Lichfield Road Ind. Estate, Tamworth, Staffordshire, B79 7XB

**Telephone:** 01827 63454

**E-mail:** sales@scolmore.com, technical@scolmore.com

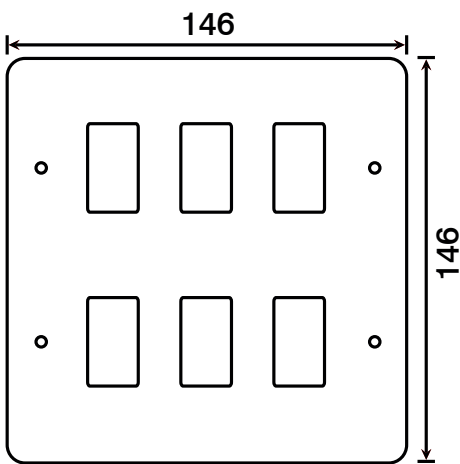
**Facsimile:** 01827 63362

**Website:** www.scolmore.com

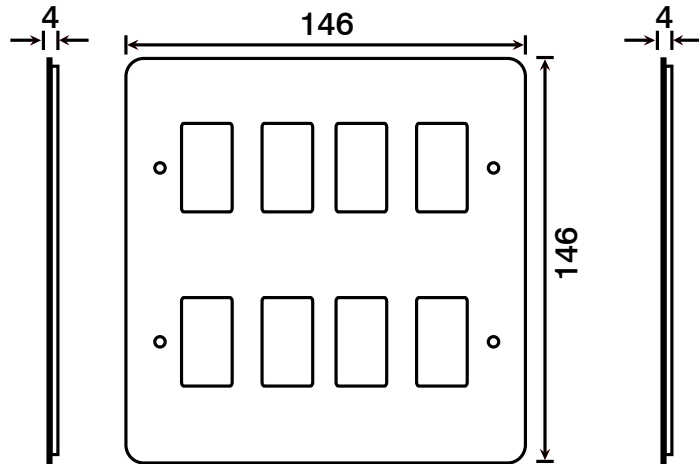
**GRIDPRO Interchangeable Plates**

**Product Dimensional Drawings (mm)**

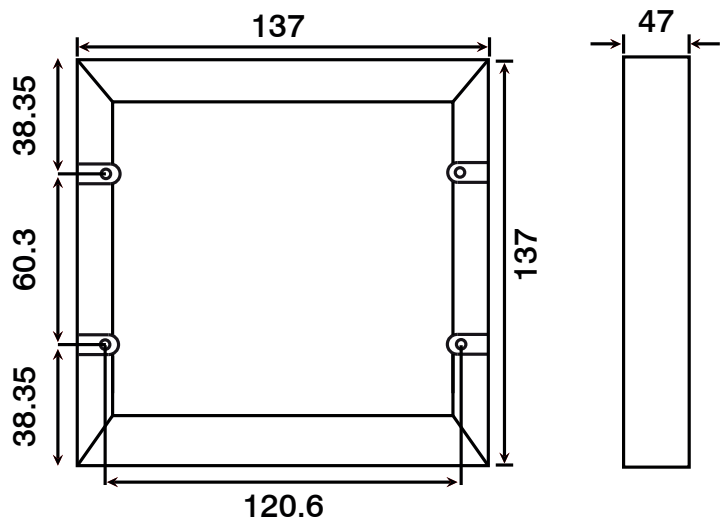
SCP20506



SCP20508



WA512



Errors & Omissions excluded. Specification is subject to change without notice. \*\* Denotes Cover Plate Finish. SIN20400 to be used with all plate sizes. Utilizes standard 1 gang and 2 gang BS4662 back boxes.



## GRIDPRO Interchangeable Plates

### Technical Specification

#### GRIDPRO Interchangeable Plates

<b>Material Composition</b>	Cover Plate: Coated Stainless Steel or Polycarbonate (PW & BK) Definity Module Yokes: Galvanised Steel Earth Terminal: Brass Back Box: Galvanised Steel
<b>Cable Size</b>	Dependent on modules fitted
<b>Back Box Depth</b>	Dependent on modules fitted
<b>Modular</b>	Yes
<b>Warranty</b>	10 Years
<b>IP Rating</b>	IP20
<b>Operational Temperature</b>	-5° to +40°C
<b>Standards</b>	BS 5733 : 2010 + A1 : 2014 BS 4662: 2006 + A1: 2009 (Back Boxes)

#### Additional Information


Ensure that the mains supply is isolated before commencing installation and refer to the circuit diagram with the relevant product.

Bare earth cables must always be covered with appropriate sleeving and wired to the earth terminal.

SCP20401 & SCP20402 requires (1x) SIN20200 1-2 Module Mounting Insert.

SCP20403 & SCP20404 requires (1x) SIN20400 3-4 Module Mounting Insert.

SCP20506 & SCP20508 requires (2x) SIN20400 3-4 Module Mounting Insert. These plates are designed to be used with specified back box WA512.

Interchangeable with switches in the GRIDPRO system. 

EU DECLARATION OF CONFORMITY

1. *Issuer Name* Scolmore International Limited
2. *Issuer Address* 1 Scolmore Park, Landsberg,  
Lichfield Road Industrial Estate,  
Tamworth, Staffordshire, B79 7XB
3. *Object(s) of Declaration* Definity Range
- a. *Group* GRIDPRO Interchangeable Plates
- b. *Model No.* SCP20401, SCP20402, SCP20403, SCP20404, SCP20506, SCP20508

4. *The object of the declaration described above is in conformity with the requirements of the following Legislations:*

5. *All products contained within the aforementioned comply with the relevant standards and requirements listed below.*

BS 5733 : 2010 + A1 : 2014

6. *I hereby declare that the equipment named above has been designed to comply with the relevant sections of the above referenced specifications. The unit complies with all applicable Essential Requirements of the Directives.*

*In conjunction with the above all manufacture and process controls are in accordance with ISO 9001:2008.*

*This declaration has been issued under the sole responsibility of the manufacturer, signed at, for and on behalf of: Scolmore International Limited*

*R Turner*

Ross Turner - Technical Support Engineer